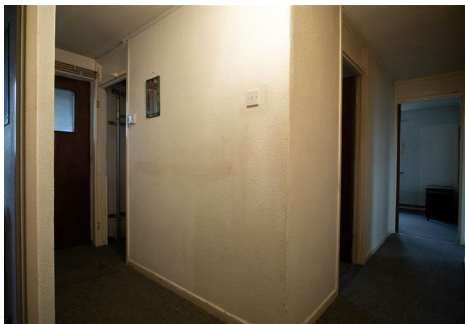


# HighgateHomes



## 17 Conway House Samuel Street, Preston, PR1 4YJ

£650 Per month

Highgate Homes bring to the market this 2 Bed Flat To Let on Samuel Street in the Fishwick area of Preston. This delightful property features two well-proportioned bedrooms, making it an ideal choice for small families, couples, or individuals seeking a comfortable living space. The apartment boasts a spacious reception room, perfect for relaxation or entertaining guests.

One of the standout features of this apartment is its prime location. It is situated close to a variety of schools and places of worship, making it an excellent choice for families and those who value community. Additionally, you will find supermarkets and shops within easy reach, providing all the essentials for daily living. The excellent transport links nearby ensure that commuting to other parts of Preston and beyond is both convenient and efficient.

Furthermore, the surrounding area offers a wealth of amenities, ensuring that you have everything you need right at your doorstep. Whether you are looking for leisure activities, dining options, or local parks, Fishwick has much to offer.

349-351 Blackpool Road, Preston, Lancashire PR2 3AB  
Telephone 01772 510780 | Email [office@highgatehomes.co.uk](mailto:office@highgatehomes.co.uk) | [www.highgatehomes.co.uk](http://www.highgatehomes.co.uk)

## Exterior



Located on Conway House in Samuel Street

## Hallway



Hallway leading to reception room which is fully carpeted

## Reception Room



A decent sized reception room which is carpeted and has double glazed windows.

## Kitchen



A Kitchen which has floor tiles and fitted kitchen units, cooker, hob and kitchen sink

## Bedroom 1



Bedroom 1 which is carpeted and has double glazed windows

## Bedroom 2



A second bedroom which is also carpeted and has double glazed windows



## Bathroom



A Partially tiled bathroom with a bath shower

## WC

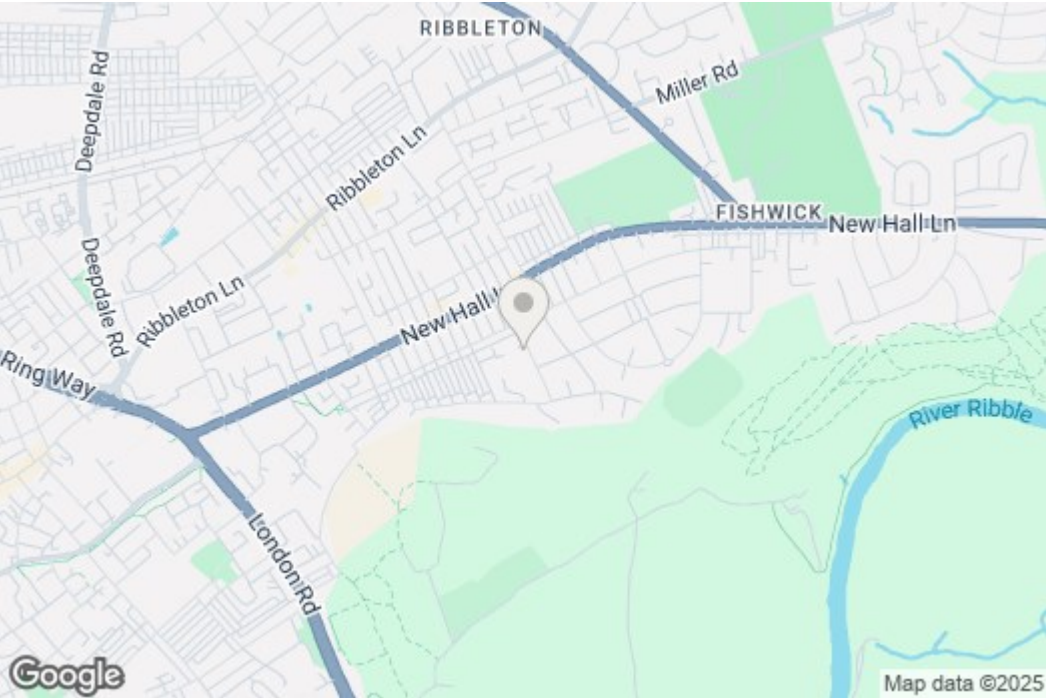


A seperate W/C

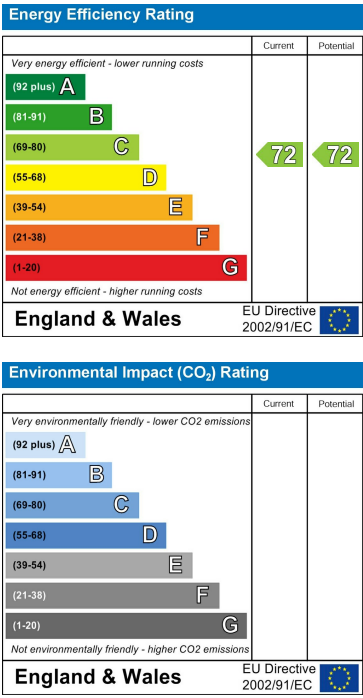


Floor Plan

Area Map



Energy Efficiency Graph



These particulars, whilst believed to be accurate are set out as a general outline only for guidance and do not constitute any part of an offer or contract. Intending purchasers should not rely on them as statements of representation of fact, but must satisfy themselves by inspection or otherwise as to their accuracy. No person in this firms employment has the authority to make or give any representation or warranty in respect of the property.